

1 bedroom apartment for sale in uMhlanga

R1,195,000



Stunning corner unit in Platinum Towers



Ellmarie Spencer +27 83 256 4381
ellmarie.spencer@pamgolding.co.za

uMhlanga +27 31 561 5300
E & OE



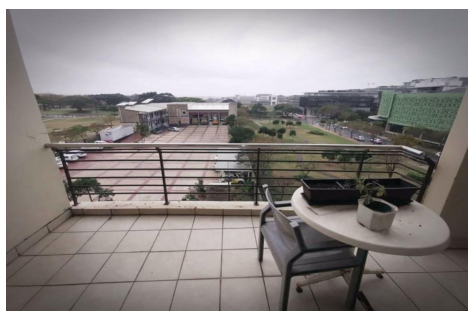
1 bedroom apartment for sale in uMhlanga



R1,195,000



Safety, security, position. High demand complex set in Umhlanga, Newtown Center. Walk to Gateway Shopping Centre. Modern unit with with open plan kitchen unit has large corner patio. Perfect for single professional, young couple or retired couple. Also good for a lock up and go. Close to all amenities. Walk across the road to Gateway Shopping Centre, 10 minutes to Umhlanga Village, The Promenade, Beaches and restaurants.



Erf Size: 1051 m2
Building / Unit size: 53 m2

Rates & Taxes: R800 per month
Levies: R1,650 per month

Features

1 bedroom / 1 bathroom / 1 parking bay / garden / swimming pool / hob / under counter oven / 24 hour manned security / cctv cameras / intercom / security complex

Parkings:

Secure Parking: 1 | Parking Bays: 1

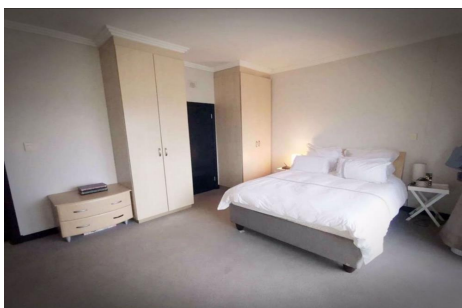
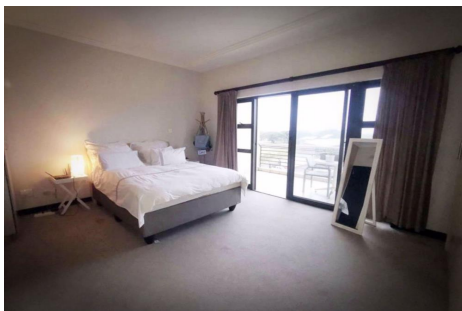
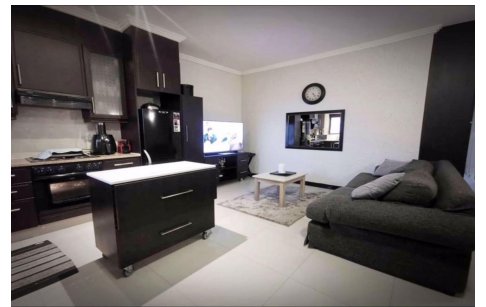
uMhlanga +27 31 561 5300
E & OE



1 bedroom apartment for sale in uMhlanga



R1,195,000



uMhlanga +27 31 561 5300
E & OE



1 bedroom apartment for sale in uMhlanga


PAM GOLDING
PROPERTIES

R1,195,000



uMhlanga +27 31 561 5300
E & OE



pamgolding.co.za