

# 331 m<sup>2</sup> commercial office to rent in Port Louis (Mauritius)

Harel Mallac 18 Edith Cavell Street, Port Louis



Rs133,730 per month long term



Ref#: MUR1562996

Harel Mallac Building



**Peter Llewellyn** +230 5 729 8006  
peter.llewellyn@pamgolding.mu

Mauritius - Black River +230 483 6555  
E & OE



pamgolding.co.za



# 331 m<sup>2</sup> commercial office to rent in Port Louis (Mauritius)

Harel Mallac 18 Edith Cavell Street, Port Louis

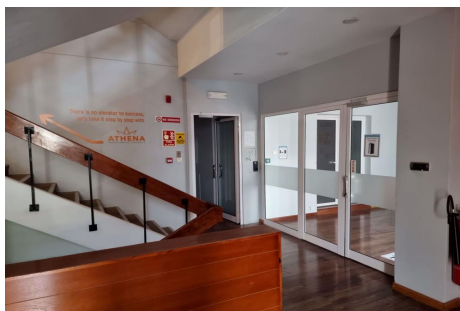


Rs133,730 per month long term



10

Situated on the commercial end of Edith Cavell Street and close to the new Victoria station and other facilities lies an office building which currently has 2 floors available for rent. The 2nd level provides 311sqm of office space made up presently with closed offices, a large open area, a reception area, toilets and a kitchen/staff area. 10 parking spaces can be allocated to this floor.



## Features

10 parking bays / office

## Parkings:

Secure Parking: 10 | Parking Bays: 10

Mauritius - Black River +230 483 6555  
E & OE



# 331 m<sup>2</sup> commercial office to rent in Port Louis (Mauritius)

Harel Mallac 18 Edith Cavell Street, Port Louis



Rs133,730 per month long term



Mauritius - Black River +230 483 6555  
E & OE

