

3 bedroom house for sale in Radloff Park

R3,142,400
includes VAT



Hathersage Private Estate - No Transfer duty



Mabel Botha-Louw +27 83 458 3782
mabel.botha@pamgolding.co.za

Somerset West +27 21 851 2633
E & OE

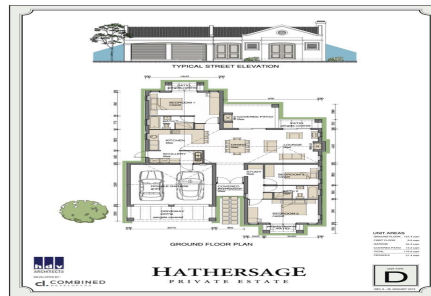


3 bedroom house for sale in Radloff Park

R3,142,400
includes VAT



Hathersage Private Estate within easy reach of some of the best schools in the country. This boutique development in Somerset West comprises 28 upmarket homes, designed with aesthetically pleasing Cape vernacular architecture. Hathersage Private Estate in Somerset West is built to the highest standards, with the added benefit of buyers being allowed various choices when it comes to the luxury fittings and finishes of their exclusive homes. The estate is located close to excellent schools, Radloff Park sports grounds, The Vergelegen Mediclinic, the Nature Reserve and historic wine farms of Vergelegen and Lourensford. Invest today and discover a place where contemporary luxury comes to life within a village atmosphere of rural tranquillity.



Erf Size: 546 m²

Building / Unit size: 175 m²

Levies: R1,696 per month

Features

pet friendly / 3 bedrooms (1 en suite) / 2 bathrooms / 1 reception room / 2 garages / secure/gated living / entrance hall / dining room / living room / fireplace / built-in cupboards / shower / open plan kitchen / caesar stone kitchen / under counter oven / undercover braai area / security complex

Somerset West +27 21 851 2633
E & OE



3 bedroom house for sale in Radloff Park



R3,142,400
includes VAT



Ref#: SW1520267

Somerset West +27 21 851 2633
E & OE



pamgolding.co.za

