

2 bedroom apartment to rent in Ashlea Gardens


PAM GOLDING
PROPERTIES

R23,500 per month long term



Modern living



Ronella Joubert +27 71 133 7699
ronella.joubert@pamgolding.co.za

Pretoria +27 12 365 9000
E & OE



pamgolding.co.za

 An International
Associate of Savills

2 bedroom apartment to rent in Ashlea Gardens

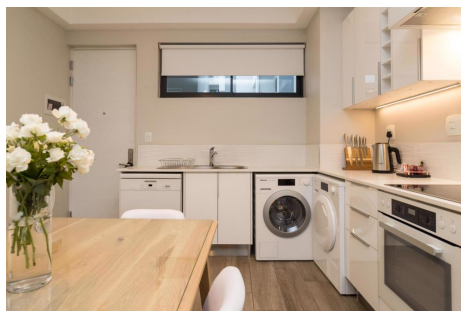


R23,500 per month long term



Quick Facts: * Ground floor 2 Bedroom 2.5 -bathroom apartment with balcony * Generator for back-up power supply * Two parking bays in the basement * Communal landscaped gardens with sparkling rim-flow pool * Secure parking, access control & electric fencing * Fibre Internet connectivity & DSTV-ready * Buy to let -opportunity * Restaurant * Concierge services * Shuttle service * Laundry service * Private gym Key Features: * Heat pump with solar water heating * Hans Grohe fittings * Ceasorstone finishes * Miele kitchen appliances included: built-in oven & hob, extractor, fridge, microwave oven, washing machine, tumble dryer and dishwasher * Floor-to-ceiling aluminium and glass sliding doors Perfect Location: Avis - Gautrain - Hatfield Car Rental 4.30 km Gautrain Hatfield Station Railway Station 4.90 km Intercare Glenfair Hospital/Clinic 2.18 km Upper Waterkloof Clinic Medicare Hospital/Clinic 2.28 km MediCross Constantia Park Hospital/Clinic 3.02 km SAPS - Garsfontein PoliceStation 2.22 km South African Police Union Police Station 3.58 km Saps - Brooklyn PoliceStation 4.22 km Menlyn Park Mall shopping centre 0.54 km Menlyn Park shopping centre 0.63 km Maroelana Shopping Centre shopping centre 0.85 km Cti Education Group TertiaryInstitution 1...

[Read more on the Pam Golding Properties Website](#)



Building / Unit size: 92 m2

Features

furnished / 2 bedrooms (2 en suite) / 2 bathrooms / 2 parking bays / city living / secure/gated living / garden / building plans / road access / swimming pool / restaurant / air conditioning / elevator / living room / tv / built-in cupboards / double basin / shower / open plan kitchen / dish or wash machine connection / dishwasher / extractor fan / fridge / microwave / tumble dryer / under counter oven / washing machine / conference centre / landscaped / 24 hour manned security / cctv cameras / guard house / security gates / cellular coverage

Parkings:

Secure Parking: 2 | Parking Bays: 2

Pretoria +27 12 365 9000
E & OE



2 bedroom apartment to rent in Ashlea Gardens



R23,500 per month long term



Pretoria +27 12 365 9000
E & OE



pamgolding.co.za